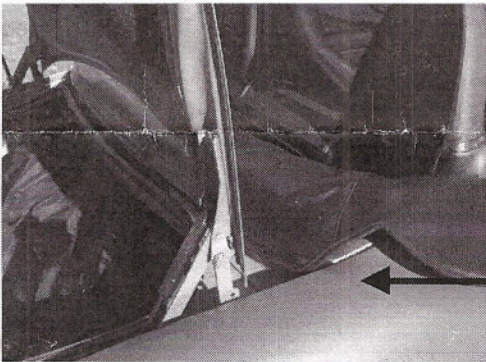


INSTALLATION OF TRAVEL BOOT

1. Lower Roof and stow levers.



2. Lay Travel Boot over roof, placing the rear edge into the trunk rain gutter forward of the trunk seal.



3. Close trunk lid slowly making sure the edge of the Travel Boot does not bind in the gap between the trunk lid and the car.
4. Attach tenax fasteners (4) and slide side panel inside of roof well.

