

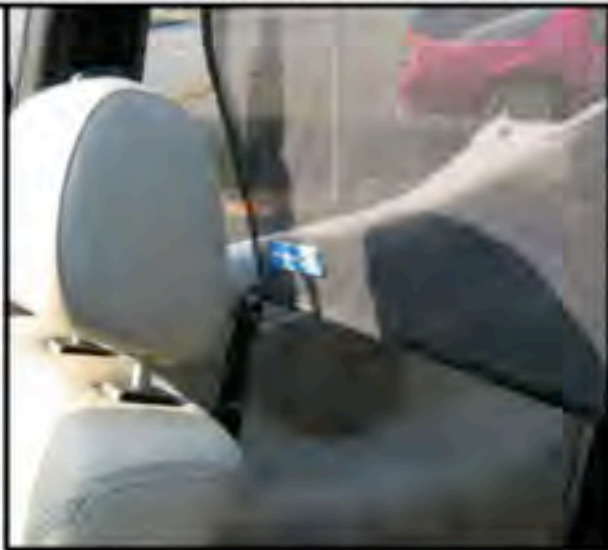


We have our video install guides on our website and on youtube.com Also feel free to call or email us if you have any questions 1-855-457-5683 [information@lovethedrive.com](mailto:information@lovethedrive.com)

# Wind Deflector VW CABRIO - MARK 1 1978 to 1993 Installation Guide

**START BY PUTTING YOUR TOP DOWN**

REMOVE THE WIND DEFLECTOR FROM THE BAG AND PLACE IT IN THE BACK SEAT AREA, AS IT SITS BEHIND THE FRONT SEATS



START BY LINING THE PLASTIC SLIDER UP WITH THE TOP OF THE ROLL BAR. THE STRAP WILL GO UNDER THE ROLL BAR



LOVE THE DRIVE COPY RIGHT 2007

PRINTED IN CANADA

THE STRAP GOES UNDER THE ROLL BAR THEN BACK OVER THE ROLL BAR AND THRU THE SLIDER



PULL THE STRAP SNUG AND THEN FOLD THE STRAP SO THE VELCRO ON EACH SIDE OF THE STRAP IS HELD IN PLACE



REPEAT ON THE OTHER SIDE. YOU WILL LIKELY NEED TO MAKE SMALL ADJUSTMENTS TO THE STRAP TO GET AN EVEN LOOK, WITH NO WRINKLES



NOW MOVE TO THE BACK OF THE CAR. THERE IS A ROD AT THE FRONT OF THE VINYL. THIS ROD SITS IN FRONT OF THE BACK SEATS. THE ROD WILL BE 4 INCHES BELOW THE TOP OF THE BACK SEAT



NEXT PULL THE ELASTIC STRAP IN-BETWEEN THE BACK SEAT AND THE TRIM PANEL... PULL UNTIL THE VINYL COVERS THE BACK SEAT



THE ELASTIC WILL FIT SNUGLY BETWEEN THE BACK SEAT AND THE PANEL. REPEAT ON THE OTHER SIDE

